

# THE STATE OF THE DEPARTMENT OF PUBLIC HEALTH

FY2010-11

# Topics

---

- Research Contributions
- New and Noteworthy
- By the Numbers: people, \$'s, growth

# Research Contributions



A partial (but illustrative) list

# Research Contributions

- ADA adopts patient assessment score for diabetes risk—**Bang, Kern, Mushlin, Edwards**, others (*Annals of Internal Medicine*)
- HIV epidemics emerging in MENA; effective public health measures needed—**Abu-Raddad** and colleagues (*PLoS Medicine*)
- Physicians and consumers supportive of health information exchange—**Kaushal, Patel, Abramson, Barron, Malhotra, Edwards, Dhopeswarkar**, O'Donnell (*Journal of General Internal Medicine, American Journal of Managed Care, International Journal of Medical Informatics, Journal of Medical Systems*)
- US medical practices spend much more on admin than Canadian—**Casalino** (*Health Affairs*)

# Research Contributions

- Electronic prescribing reduces ambulatory medication errors—**Kaushal, Abramson, Barron, Malhotra, Edwards, Dhopeswarkar** (*JGIM, Joint Commission Journal of Quality and Safety*)
- Haiti clinical trial results show WHO guidelines recommending earlier initiation of HIV therapy cost-effective—**Schackman, Koenig, Fitzgerald, Johnson, Pape, Bang, Edwards** + GHESKIO investigators (*PLoS Medicine*)
- CAD patients nationwide are often treated with stents without first having recommended medical treatment—**Borden, Mushlin, others** (*JAMA*)
- FDA’s “humanitarian device exemption” needs revision to better protect vulnerable patients—**Fins, others** (*Health Affairs*)
- Comprehensive guide for hospital emergency preparedness exercises—**Hupert, Xiong, Miller** (*AHRQ*)

# Research Contributions

- Methodological approaches to the evaluation of community based HIT—**Kaushal, Kern, Ancker, Abramson, Patel** (Two articles in *Journal of the American Medical Informatics Association*)
- Medicare P4P did not decrease access for minority patients —**Ryan** (best article of the year in *Health Services Research*)
- Malpractice risk as high in outpatient settings as in hospitals. Dx errors predominate—**Bishop, Casalino, Ryan** (*JAMA*)
- Teens with better cognitive/behavioral skills less likely to take health risks as young adults—**Griffin, Botvin**, others (*International Journal of Environmental Research & Public Health*)

# Research Contributions

- Risk factors for complications after joint replacements—**Memtsoudis, Mazumdar, Ma, Chiu**, others (*Anesthesia and Analgesia*)
- Almost a quarter of physicians' time spent on patient needs outside of office visits—**Chen, Casalino** (*JGIM*)
- Physicians not accepting health insurance: access issues looming—**Bishop** (*Archives of Internal Medicine*)
- Trends in use of knee replacements higher; racial disparities remain—**Bang, Mazumdar, Chiu, Mandl, Mushlin, Marx**, others (*American Journal of Orthopedics*)
- Work hour reductions for house staff did not affect hospital readmission rates—**Press** (*JGIM*)

# Research Contributions

- “Telemedicine hub” can boost survival rate of critically injured victims—**Hupert, Xiong**, others (*Journal of Medical Systems*)
- Transitioning from one electronic prescribing system to another poses safety risk—**Kaushal, Patel, Abramson, Barron, Malhotra, Zandieh, Edwards, Dhopeswarkar** (*JGIM, Journal of Evaluation in Clinical Practice, Journal of the American Medical Informatics Association*)
- Teen alcohol use linked to “non-academic” time spent using computers—**Epstein** (*Addictive Behaviors*)
- Self-care support programs could improve blood pressure control—**Gerber, Feldman, Barrón** (*Journal of Ambulatory Care Management*)

# New and Noteworthy



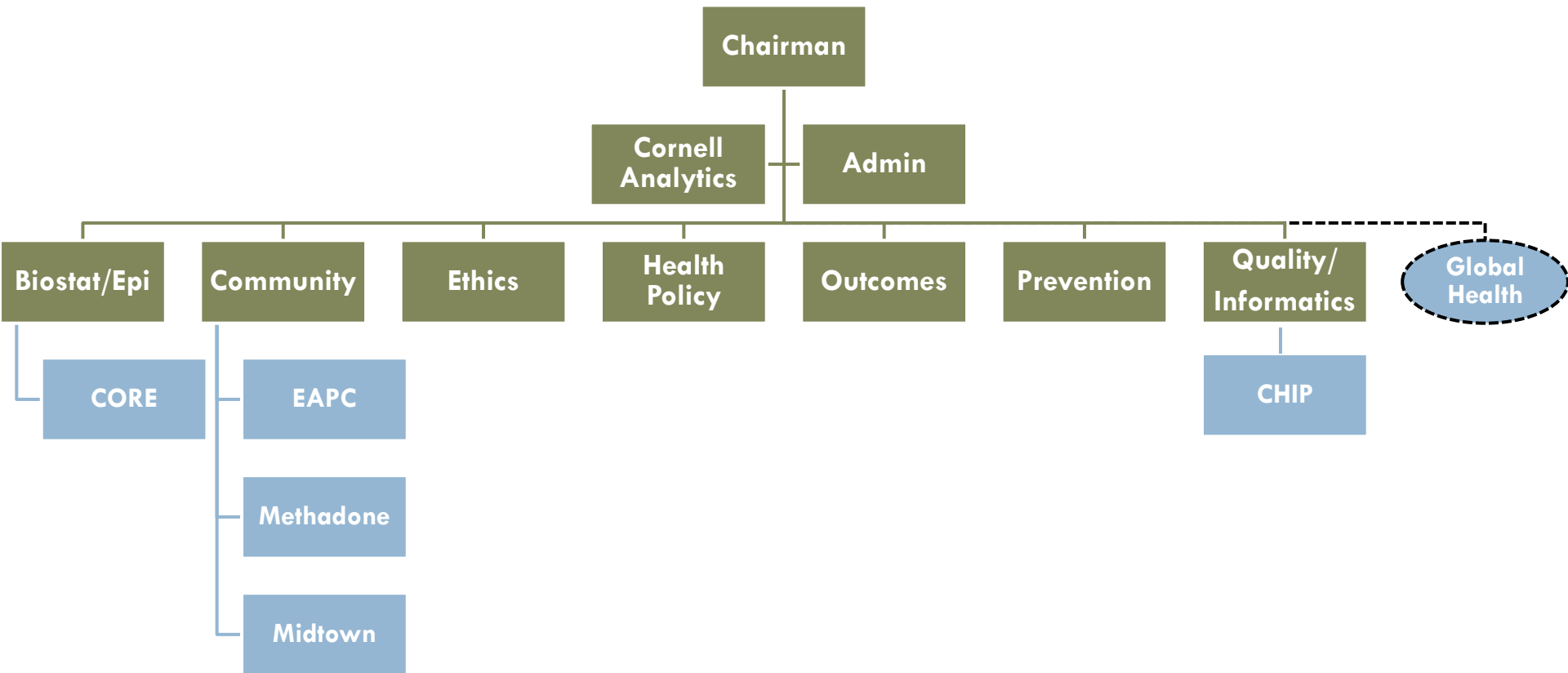
Again, illustrative—not everything

# New and Noteworthy

## □ ***New Programs and Program News***

- Center for Healthcare Informatics and Policy (CHIP)
- Program in Addiction Treatment Evidence and Economics (PATEE)
- MDEpiNet/ICOR
- Suboxone treatment at Midtown Center
- EAPC renovation

# Department Organization



# Noteworthy

## □ **Honors**

- **Botvin**, 2011 John Doris Memorial Lecture at Cornell
- **Casalino**, John Fry Fellowship at Nuffield Trust
- **Fins**, Institute of Medicine
- **Kaushal & Fins**, named Professorships
- **Ma, Chiu, Mazumdar**, Best Oral Presentation at European Hip Society
- **Ryan**, Eisenberg Article-of-the-Year award from Health Services Research

# Noteworthy

## □ **Appointments**

- **Abu-Raddad**, Advisory Member for World Bank's Global HIV/AIDS Program
- **Hupert**, Scientific Advisory Board of MIDAS Consortium
- **Mazumdar**, ELAM Fellowship Program
- **Mushlin**, Associate Editor for new journal, *Comparative Effectiveness Research*
- **Rodríguez del Pozo**, National Committee on Research Ethics and Regulations of the Qatar Council for Health

# Noteworthy

## □ *Teaching Awards*

- **Finkel**, 4<sup>th</sup> year Public Health Clerkship
- **Abu-Raddad**, Fundamentals of Physics II (pre-med curriculum)/Qatar
- **Mahfoud**, Medicine, Patients & Society I/Qatar
- **Rodríguez del Pozo**, Humanism in Medicine and Medicine, Patients & Society II/Qatar

# New Grants and Contracts

---

- Federal/Foundation: 16
- Qatar: 6

# New and Noteworthy

## □ ***Education and Training Programs***

- 3 new CER courses in MS in Clinical Investigation
- Health IT Certificate Program graduated 77 participants
- Divisions of Outcomes & Effectiveness Research, Health Policy, and Quality & Medical Informatics initiate joint seminar series
- Division of Biostatistics and Epidemiology seminars additionally focus on “Epidemiology and Translational Research” with CTSC
- Journal Club and Software Tutorials for Faculty and Staff

# New Faculty

- **Primary**

- **Stephen Johnson, PhD**, Preliminary Assistant Professor/Associate Professor
- **Melissa Honour, MPH**, Research Associate and Administrative Director, CHIP
- **Ziyad Mahfoud, PhD**, Associate Professor/Qatar
- **Ellen Meltzer, MD, MSc**, Assistant Professor
- **Christopher Sturiano, PhD**, Assistant Professor

- **Ithaca**

- **James Booth, PhD**, Professor
- **Valerie Reyna, PhD**, Professor
- **Robert Strawderman III, ScD**, Professor
- **Martin Wells, PhD**, Professor

- **Dual**

- **Adam Cheriff, MD**, Associate Professor
- **Karen Scott, MD, MPH**, Assistant Professor

# New Staff

- Jamie Lo, MA, Grants Administrator
- Jayme Mendelsohn, MPH, Research Coordinator
- Katherine O'Brien, Grants Administrator
- Lucas Romero, Assistant Research Coordinator
- Xuming Sun, MS, Research Biostatistician
- Shangaza Walcott, Financial Coordinator

# New Fellows/Residents/Post-docs

- Bianca Acevedo, PhD (Prevention and Health Behavior)
- Victor Brodsky, MD (Quality & Medical Informatics)
- Richelle DeMayo, MD, CM (Quality & Medical Informatics)
- Zachary Grinspan, MD (Quality & Medical Informatics)
- Sandra Hurtado Rúa, PhD, MS (Biostatistics & Epidemiology)
- Nobuaki (Noble) Nakaya, MD (Community & Public Health Programs)
- Andrew Shuman, MD (Medical Ethics)
- Matthew Simon, MD (General Preventive Medicine)

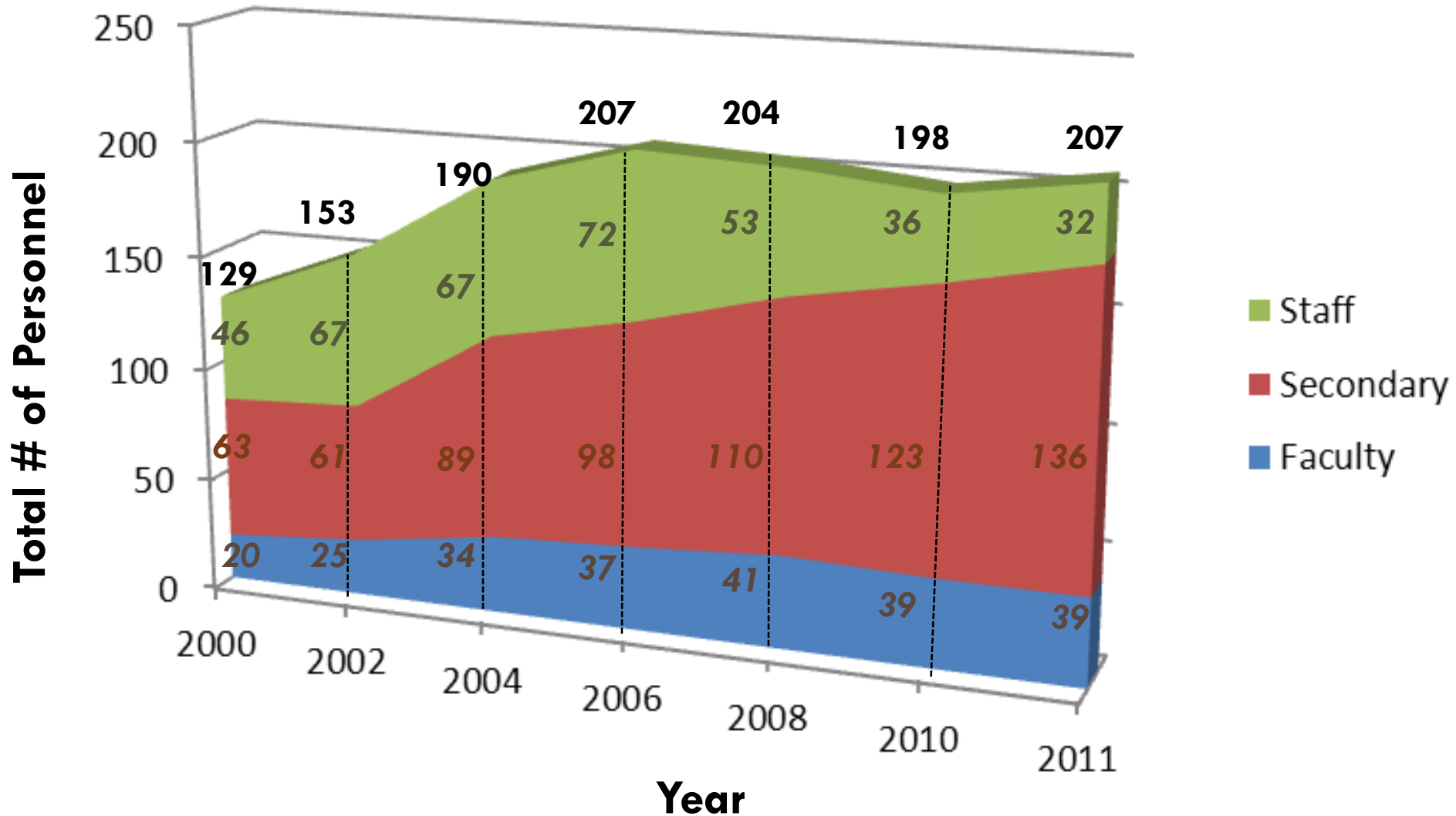
# New and Noteworthy

- ***Faculty Promotions (primary appointment)***
  - ▣ Samprit Banerjee, PhD, MStat, Assistant Professor
  - ▣ Hassan Ghomrawi, PhD, MPH, Assistant Professor
  - ▣ Sameer Malhotra, MD, MA, Assistant Professor
  - ▣ Bruce Schackman, PhD, Associate Professor with Tenure

# New and Noteworthy

- **Faculty Promotions** *(dual appointment)*
  - Peter Bach, MD, MA, Professor
  - Nicholas Schiff, MD, Professor
  - Phyllis Supino, EdD, Research Professor
  
- **Staff Promotions**
  - Allison Dunning, MS, Research Biostatistician
  - Ashley Eggman, MS, Research Coordinator
  - Jared Leff, MS, Program Supervisor

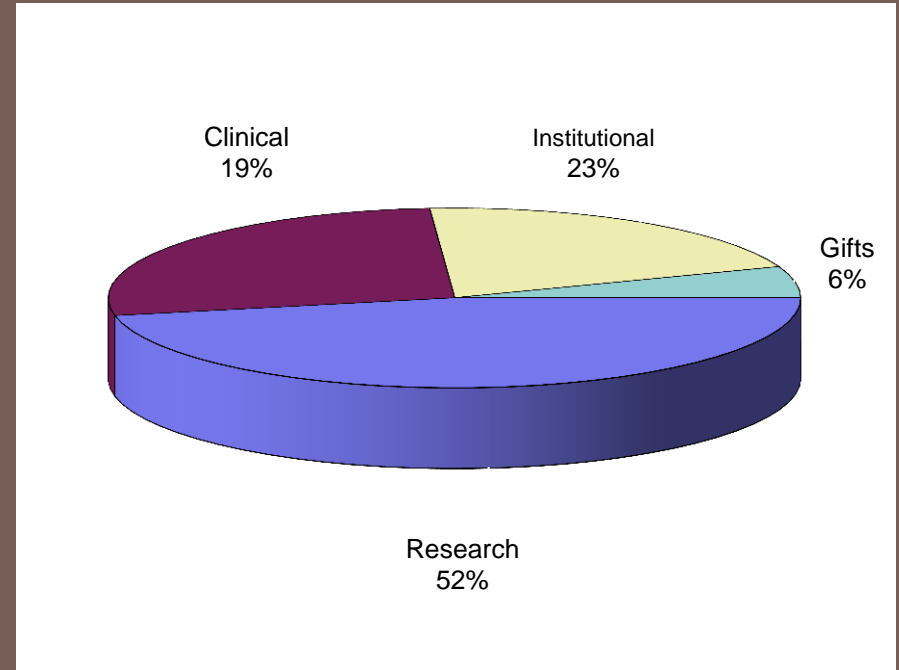
# People as of June 30, 2011



# FINANCIAL SUMMARY: FY 2011

## SOURCES

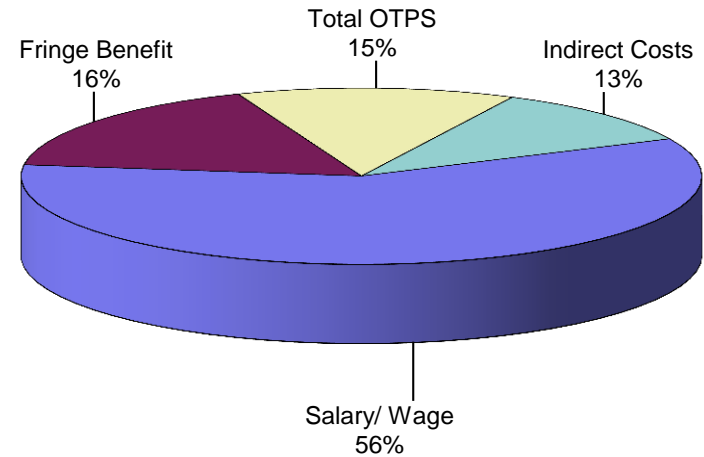
Research Grants/Contracts	6,968,948
Clinical/Program Funds	2,575,373
Institutional Funds	3,119,140
<u>Endowments/Gifts</u>	<u>803,358</u>
<b>Total Dept Funding</b>	<b>13,466,820</b>



# FINANCIAL SUMMARY: FY2011

## USES

Salary/Wage	7,620,377
Fringe Benefit	2,173,210
Total OTPS	1,967,210
<u>Indirect Costs</u>	<u>1,773,815</u>
<b>Total Expenses</b>	<b>13,534,611</b>

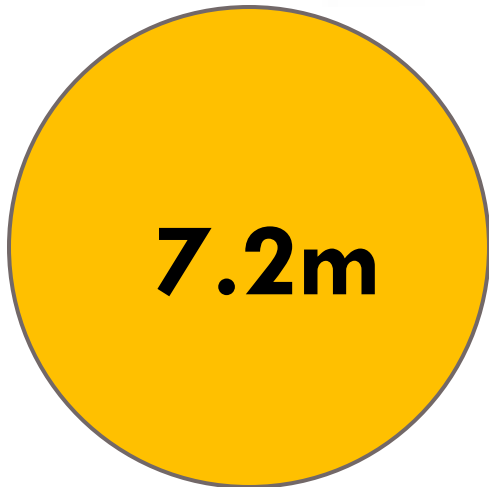


**Department of Public Health  
Looking Back: Size almost doubles**

**87%  
Growth**

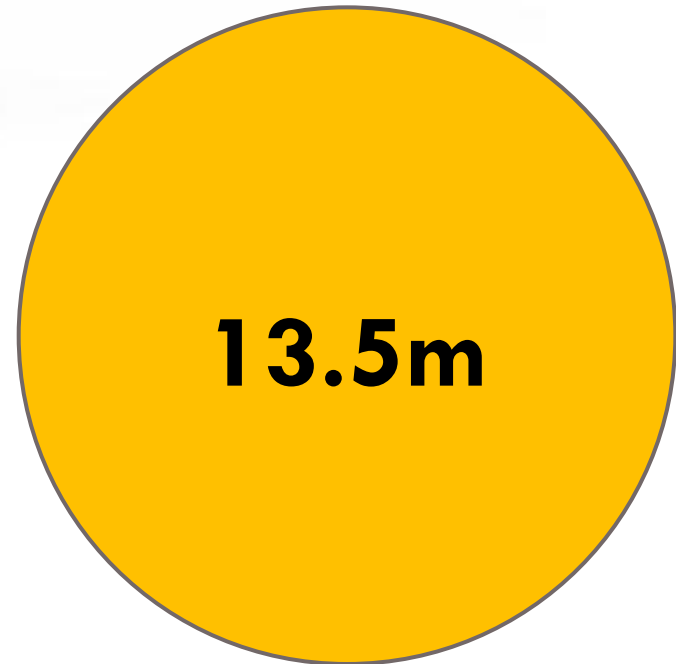


**1999**



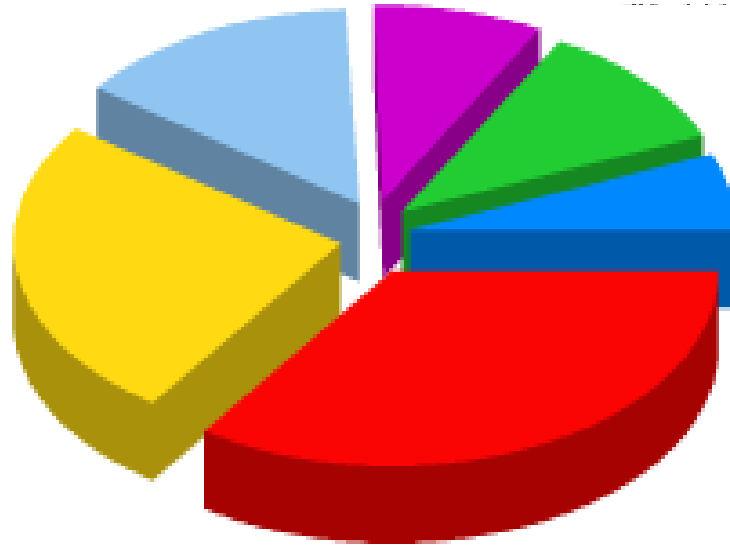
**7.2m**

**2011**



**13.5m**

# Department of Public Health Looking Back: Research Increases



**Total - 61 Grants**



**Total - 5 Grants**

